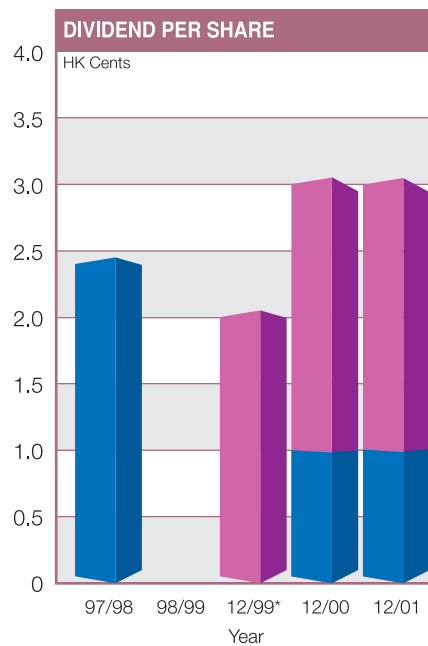
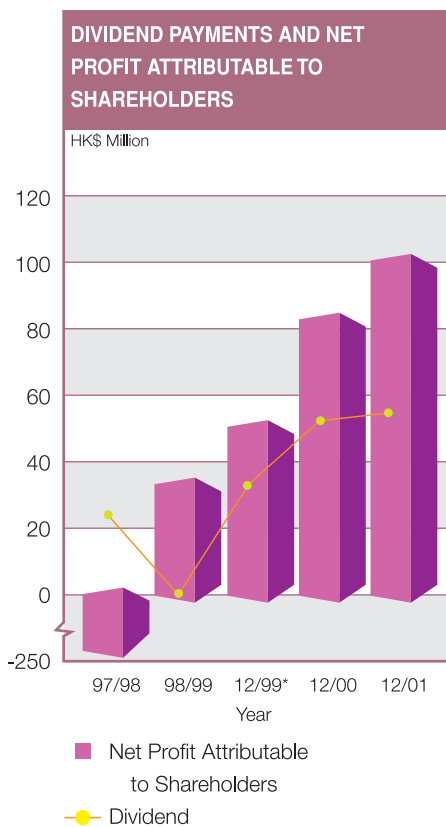
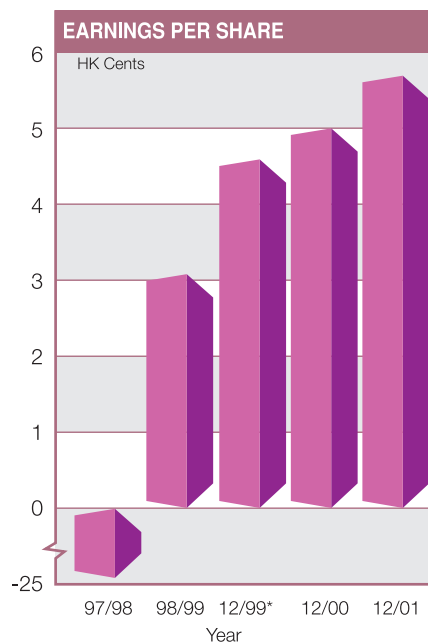
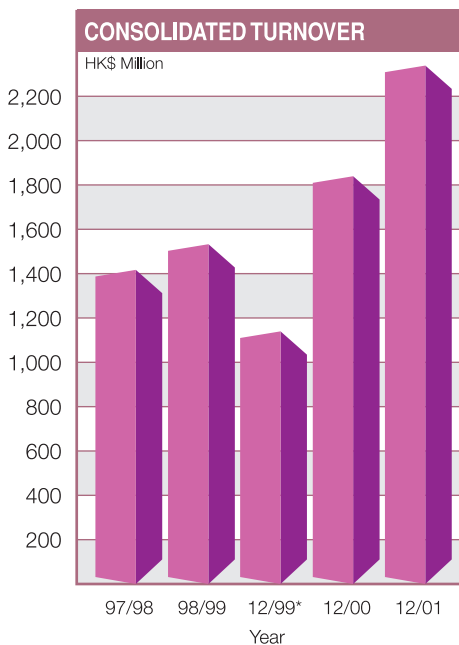


## Five Year Summary

	Year ended 31st March 1998 HK\$'000	Year ended 31st March 1999 HK\$'000	Nine months ended 31st December 1999 HK\$'000	Year ended 31st December 2000 HK\$'000	Year ended 31st December 2001 HK\$'000
<b>CONSOLIDATED PROFIT AND LOSS STATEMENT</b>					
Turnover	<u>1,345,760</u>	<u>1,473,775</u>	<u>1,078,087</u>	<u>1,778,450</u>	<u>2,274,900</u>
Net profit/(loss) before tax	(135,885)	143,102	96,096	158,113	159,290
Taxation	(23,852)	(24,398)	(16,075)	(26,981)	(11,103)
Minority interests	<u>(81,618)</u>	<u>(85,207)</u>	<u>(29,928)</u>	<u>(49,057)</u>	<u>(47,951)</u>
Profit/(loss) attributable to shareholders	<u>(241,355)</u>	<u>33,497</u>	<u>50,093</u>	<u>82,075</u>	<u>100,236</u>
Earnings/(loss) per share (HK cents)	(23.0)	3.0	4.5	4.9	5.6
Dividend per share (HK cents)	2.4	—	2.0	3.0	3.0
<b>CONSOLIDATED BALANCE SHEET</b>					
Fixed assets	986,345	1,327,085	1,287,800	1,234,865	988,610
Associated companies and jointly controlled entities	327,225	315,771	287,010	533,685	634,976
Other non-current assets	42,014	54,137	74,701	98,784	163,650
Net current assets	<u>1,955,503</u>	<u>1,931,831</u>	<u>2,754,466</u>	<u>2,688,916</u>	<u>2,953,616</u>
Employment of capital	<u>3,311,087</u>	<u>3,628,824</u>	<u>4,403,977</u>	<u>4,556,250</u>	<u>4,740,852</u>
Financed by:					
Share capital	110,485	110,485	165,728	176,525	187,075
Reserves	<u>1,782,468</u>	<u>1,847,799</u>	<u>2,072,177</u>	<u>2,121,402</u>	<u>2,196,995</u>
Shareholders' funds	1,892,953	1,958,284	2,237,905	2,297,927	2,384,070
Minority interests	1,043,613	1,086,970	1,072,898	1,110,349	1,071,648
Long term liabilities	355,081	564,130	1,074,364	1,127,624	1,263,460
Non-current liabilities	<u>19,440</u>	<u>19,440</u>	<u>18,810</u>	<u>20,350</u>	<u>21,674</u>
Capital employed	<u>3,311,087</u>	<u>3,628,824</u>	<u>4,403,977</u>	<u>4,556,250</u>	<u>4,740,852</u>
Net assets value per share (HK\$)	1.71	1.77	1.35	1.30	1.27



\* Nine months ended

**Five Year Summary**

