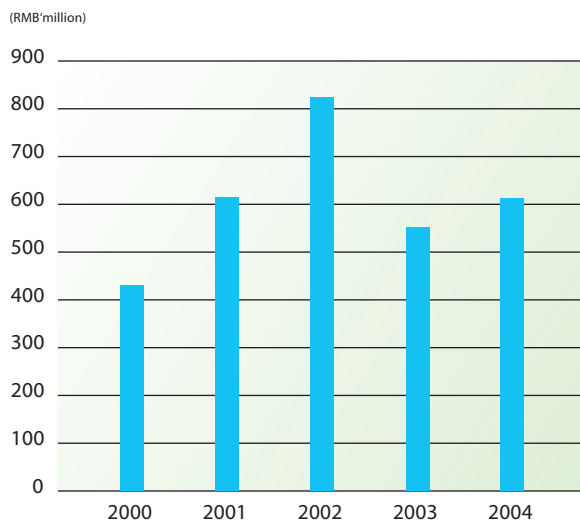


Five Years Financial Summary

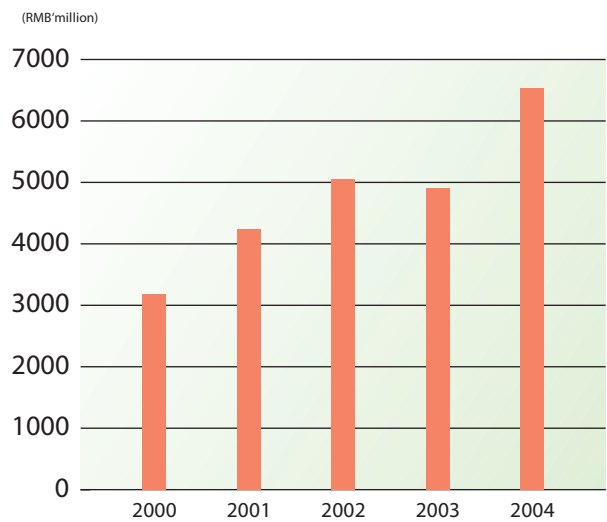
	2000	2001	2002	2003	2004
Financial Results and Information (RMB'million)					
Revenue	3,174	4,237	5,057	4,900	6,532
Operating Profit	549	769	970	663	746
EBITDA	602	840	1,056	781	890
Profit Before Tax and Share of Profit of Associates	526	754	957	650	734
Net Profit Attributable to Shareholders	430	615	823	552	616
Short-term Bank Loans	223	200	200	200	180
Total Assets	1,256	1,890	2,959	3,203	3,613
Total Liabilities	439	357	429	409	404
Net Assets	817	1,533	2,530	2,794	3,209
Growth (yoy%)					
Revenue	38.1	33.5	19.4	(3.1)	33.3
EBITDA	33.2	39.7	25.7	(26.0)	13.9
Profit Before Tax and Share of Profit of Associates	42.1	43.4	26.9	(32.0)	12.9
Net Profit Attributable to Shareholders	42.1	43.0	33.8	(32.9)	11.6
Net Assets	64.4	87.5	65.0	10.4	14.8
Margins (%)					
Operating Profit	17.3	18.1	19.2	13.5	11.4
EBITDA	19.0	19.8	20.9	15.9	13.6
Profit Before Tax and Share of Profit of Associates	16.6	17.8	18.9	13.3	11.2
Per share (RMB)					
Net Assets Per Share	0.88	1.46	2.23	2.47	2.83
Earnings Per Share*	0.46	0.60	0.76	0.49	0.54
Dividends Per Share	0.118	0.219	0.329	0.146	0.208
Financial Ratios					
Return on Assets (%)	48.5	48.3	39.5	21.1	21.7
Return on Equity (%)	65.4	48.3	40.5	20.7	20.5
Net Gearing Ratio (%)	15.4	Cash	Cash	Cash	Cash
Gearing Ratio (%)	27.2	13.0	7.9	7.2	5.6
Inventory Turnover (Days)	49	43	39	36	16
Debtors Turnover (Days)	31	31	33	37	13
Interest Cover (X)	23.5	52.6	73.5	51.5	58.1

* The per share data for 2000 has been computed on the Group's pre-invitation share capital of 933,324,723 and weighted average post-invitation share capital of 1,029,653,490 for 2001, 1,088,612,394 for 2002 and 1,133,324,723 for 2003 and 2004.

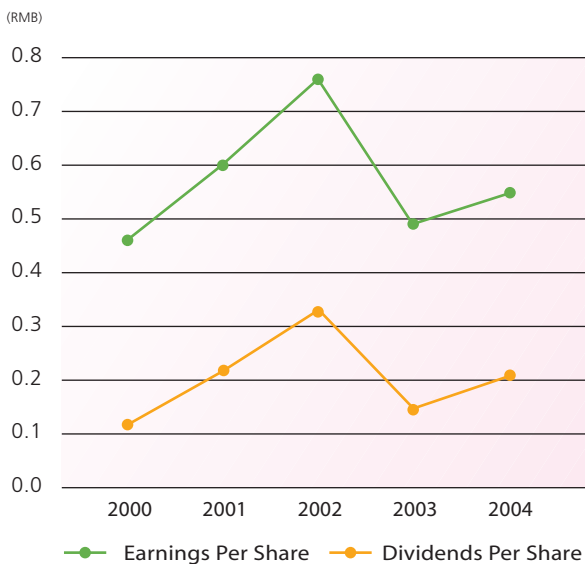
Net Profit Attributable to Shareholders



Revenue



Earnings and Dividends Per Share



Net Assets

