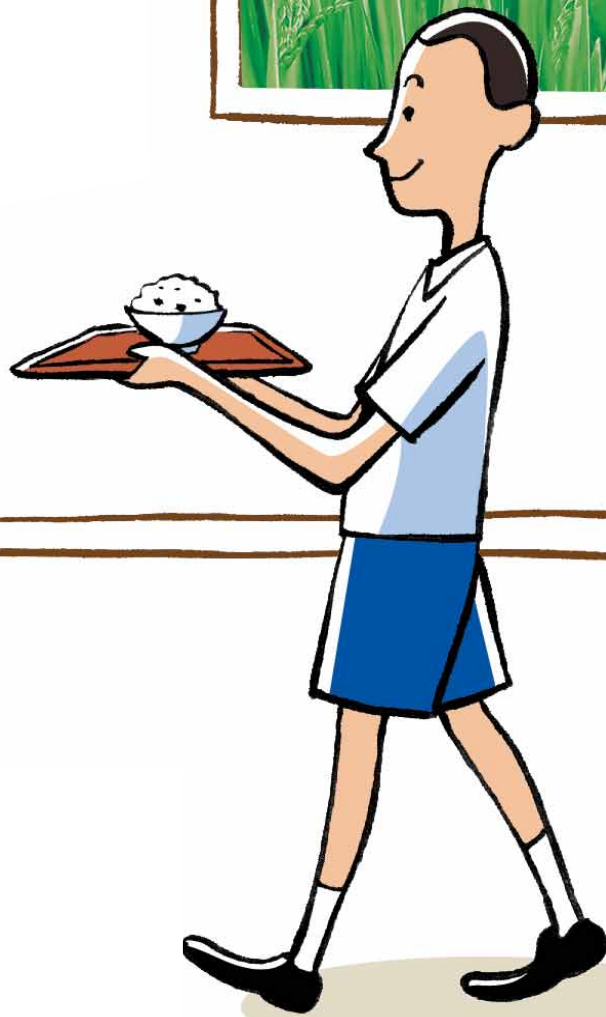


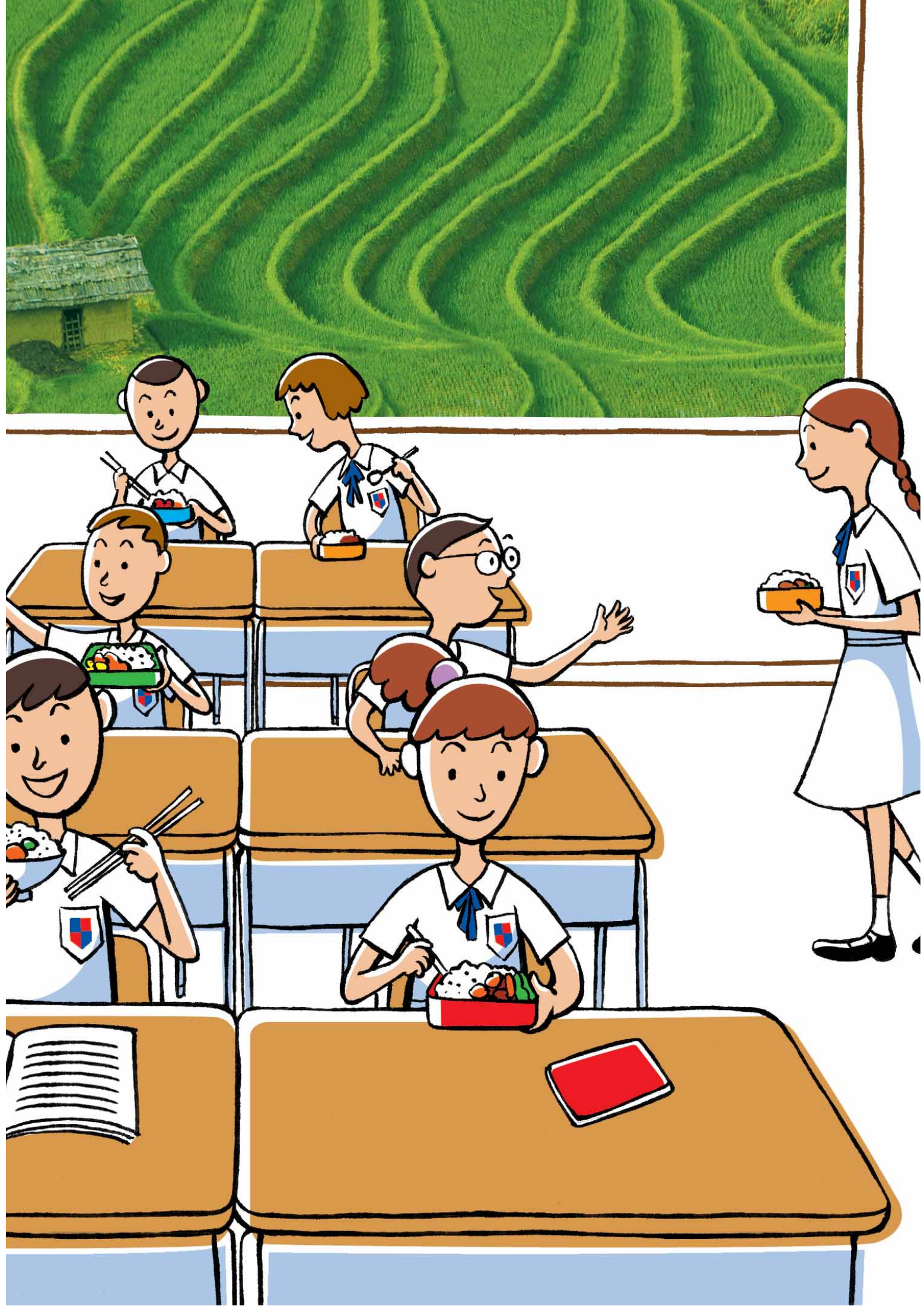
一粥一飯 以愛相傳



Company
Background

集團發展





Company Background

集團發展



Established in 1946, the Golden Resources Group was proud to achieve listing on The Stock Exchange of Hong Kong Limited in 1991. As an innovative pioneer in the local rice industry, the Group can assert itself as the sole entity to have established a rice mill in Hong Kong, one of the most sophisticated and advanced rice production facilities available. With over 50 years of incessant growth, the Group has claimed a preminent position, the envy of all in its field. The Group has made its way to the forefront of this industry with a vast spectrum of highly reputable brands including Golden Elephant, Kangaroo and Cherry Blossom, to name but a few. At the inception of this new century, the Group will continue to capitalize on its highly regarded logistics system and distribution network, and endeavor to set the pace in the retail and institutional markets, in offering products and services of uncompromising and unparalleled excellence to diverse markets across the globe.

Visit www.rice.com.hk to share the proud heritage of Golden Resources Group.

Company Background

集團發展

金源米業集團創辦於1946年，並於1991年在香港聯合交易所有限公司上市，本集團不但是本港食米業之先驅，而且是全港唯一的食米加工廠，備有最精湛及先進的生產設施。經過逾五十年努力耕耘，本集團於業內取得領導地位，屬下產品包括金象、袋鼠及櫻城等廣受消費者歡迎的品牌。踏入新世紀，本集團將繼續受惠於已建立之龐大物流系統及分銷網絡，並會向世界市場提供最優質的產品及服務，從而在零售及機構性市場佔主導地位。

歡迎瀏覽 www.rice.com.hk 分享本集團之輝煌業績。



Kam Heung

Kangaroo Brand

袋鼠牌

興發

金象牌

成

Golden
Elephant
Brand

金象牌

興發

Cherry Blossom Castle Brand