

“Committed to our strategic goal of extending our geographical reach and product offerings, we have built a balanced revenue mix.”

「林麥致力實現策略性目標，拓展地域版圖及產品類別。我們已取得均衡的收益組合。」

WANG Lu Yen 王祿閻  
Chairman 主席

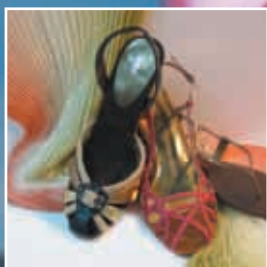
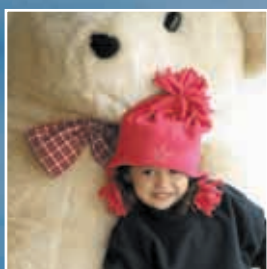


“From integrating all acquisitions, we created synergies, cross-selling opportunities and a platform for further growth.”

「隨著整合所有收購事項，我們締造了協同效益及交叉銷售機遇，並為未來增長建立了平台。」

Peter Loris SOLOMON  
*Chief Executive Officer* 行政總裁





# Apparel & Fashion Accessories 成衣、時尚飾物配件

At Linmark, clients can expect a wealth of resources and back-up facilities to help maximise creativity. Fashion design direction is supported by in-house libraries and international marketing intelligence on emerging trends, to provide clients with support and advice on all aspects of design, product planning, selection and mix.

林麥不但擁有豐富資源，更有完備設施作後盾，協助客戶發揮無限創意。時裝設計取向方面，則由自設資料庫及有關新興潮流的國際市場推廣智慧所導引，在設計、產品策劃、選擇及組合各方面均能向客戶提供支援及意見。





# Hardgoods & Electronics

## 雜貨及電子產品

Offering the latest trends in home and lifestyle products, our Hardgoods division includes homeware, domestic textiles, ceramics, gardening, gifting, furniture and toys.

We provide retail data analysis, system integration forecasting and supply analysis within the consumer electronics and small domestic appliances sector. Linmark Electronics draws on its years of experience by developing market leading systems and procedures.

提供緊貼潮流的家居及具生活品味的產品，本集團雜貨部門包括傢具、本地成衣、陶瓷、園藝產品、禮品、傢俬及玩具。

我們為消費電子產品及小型家電業提供零售數據分析、系統整合預測及供應分析的服務。林麥電子產品部憑藉多年的經驗開發出具有市場領導地位的系統及程序。



# International Laboratory Services 國際標準測檢服務

International Laboratory Services (ILS) provides textile testing laboratory facilities for international clients. Using the newest technology, 80,000 tests can be processed a year. ILS is specifically set up for garment, fabric and textile industry testing and guidance. Our commitment is to quality, with each report meeting national and international standards.

國際標準測檢服務為全球客戶提供成衣測檢設施。利用嶄新的科技，可一年進行八萬次的測檢。國際標準測檢服務專為成衣、布料及紡織業的測試及指引而設。本集團堅守對品質的承諾，堅持每份測檢報告皆達到國家及國際標準。






# Packaging 包裝

Our in-house Trim and Packaging division provides a competitively-priced design development and production service for woven labels, hang tags, patches, buttons, ribbons and tapes, printed poly bags and paper packaging.

我們自設的輔料及包裝部門為織布標籤、掛牌、貼布、鈕扣、絲帶及各類帶子、印花聚纖手袋及紙品包裝等提供具競爭價格的設計開發及生產服務。





Through partnering with Linmark, clients can fulfil every sourcing need under one roof, whether they require comprehensive laboratory services, the best designers or skilled packaging teams. The inbuilt flexibility of scale means that, whether a request is for 1,000 or 100,000 units, no demand is too great or too small. It's about getting the precise product to clients - on time.

與林麥合作，無論客戶需要的是全面的測檢服務、頂尖級設計師或者熟練的包裝隊伍，林麥皆能滿足每項需要。集團具備的靈活性使林麥無論需求數量多寡，皆可準時為客戶奉上指定的產品。