

About this Report

In this Sustainability Report 2017, we discuss our approach to sustainability, our performance during the year, and our plans and targets for the future. In addition to outlining our key challenges and strategies, we elaborate on the initiatives undertaken to implement our Corporate Social Responsibility (CSR) Policy.

This report has been endorsed by our CSR Committee and approved by the Boards of Directors.

In preparing this report, we have followed the Global Reporting Initiative's (GRI) Sustainability Reporting Standards and Electric Utilities Sector Disclosures, as well as HKEX's Environmental, Social and Governance (ESG) Reporting Guide. This report is prepared in accordance with the Core Option of the GRI Standards and also addresses a significant number of material disclosures required under the Comprehensive Option.

This report is designed to be read in conjunction with our other key reporting channels. Details about our policies and routine initiatives are available on our website, and more information about our governance practices and financial performance is covered in our Annual Report.

Please refer to our website to download the [HKEX ESG Content Index](#) and [GRI Content Index](#) for this report. These provide cross reference information for readers to locate individual disclosures specified in the HKEX's ESG Reporting Guide and GRI's Sustainability Reporting Standards, as well as information about how our initiatives correspond to the United Nation's Sustainable Development Goals. For some disclosures, specific information is reported directly in the [GRI Content Index](#).

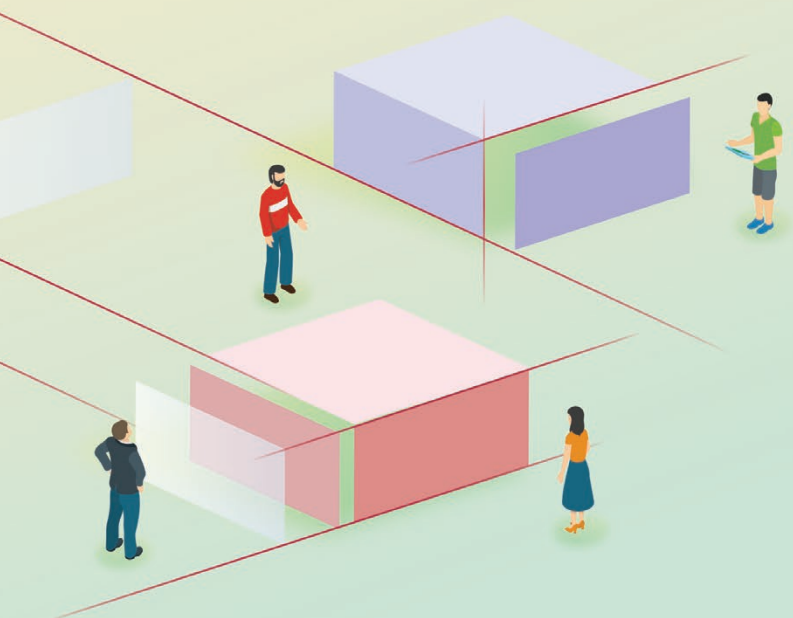
Issues for inclusion in this report were determined through a process of materiality analysis. More details including the results of our materiality assessment can be found in the Stakeholder Engagement chapter and [GRI Content Index](#).

Our data collection and analysis are based on relevant guidelines and standards, such as ISO 14064 for greenhouse gas emissions and local government guidelines for energy and carbon audits for buildings. All numerical data are presented as absolute figures unless otherwise specified. Due to rounding, some figures may not add up to the total.

The suppliers referred to in this report are those with a direct commercial relationship with us including our contractors. Our workforce basically comprises full-time employees with an insignificant portion of part-time and temporary employees. Personnel of our contractors, with whom we have no direct employment relationship, are not considered part of our workforce. In this report, shareholders refer to holders of our Share Stippled Units.

In line with our commitment to being transparent about our sustainability impacts and to managing those impacts responsibly, we commissioned an independent third party to verify this report's contents and assure its credibility. The Verification Statement can be found at the end of this report.

We welcome your comments on this report and our sustainability performance, and we encourage you to send us your views by completing the online feedback form on our website www.hkei.hk.



The cover of this report shows how HKEI, as an energy supplier in Hong Kong, is working together with its stakeholders to implement a low-carbon blueprint for the sustainable development of the Group, the local economy and the community. We are achieving low-carbon power generation by increasing the use of natural gas and renewable energy, supporting the wider use of electric vehicles, and encouraging low-carbon living for a sustainable future.

